

# State of Wyoming Corner Record

(In compliance with the *CORNER PERPETUATION AND FILING ACT*, Wyoming Statutes, 1997, Section 33-29-140, et seq., and the Rules and Regulations of the Board of Registration for Professional Engineers and Professional Land Surveyors)

Reverse side of this form may be used if more space is needed.

Record of original survey and citation of source of historical information (if corner is lost or obliterated). Description of corner monumentation evidence found and/or monument and accessories established to perpetuate the location of this corner. Sketch of relative location of monument, accessories, and reference points with course and distance to adjacent corner(s) (if determined in this survey). Method and rationale for reestablishment of lost or obliterated corner.

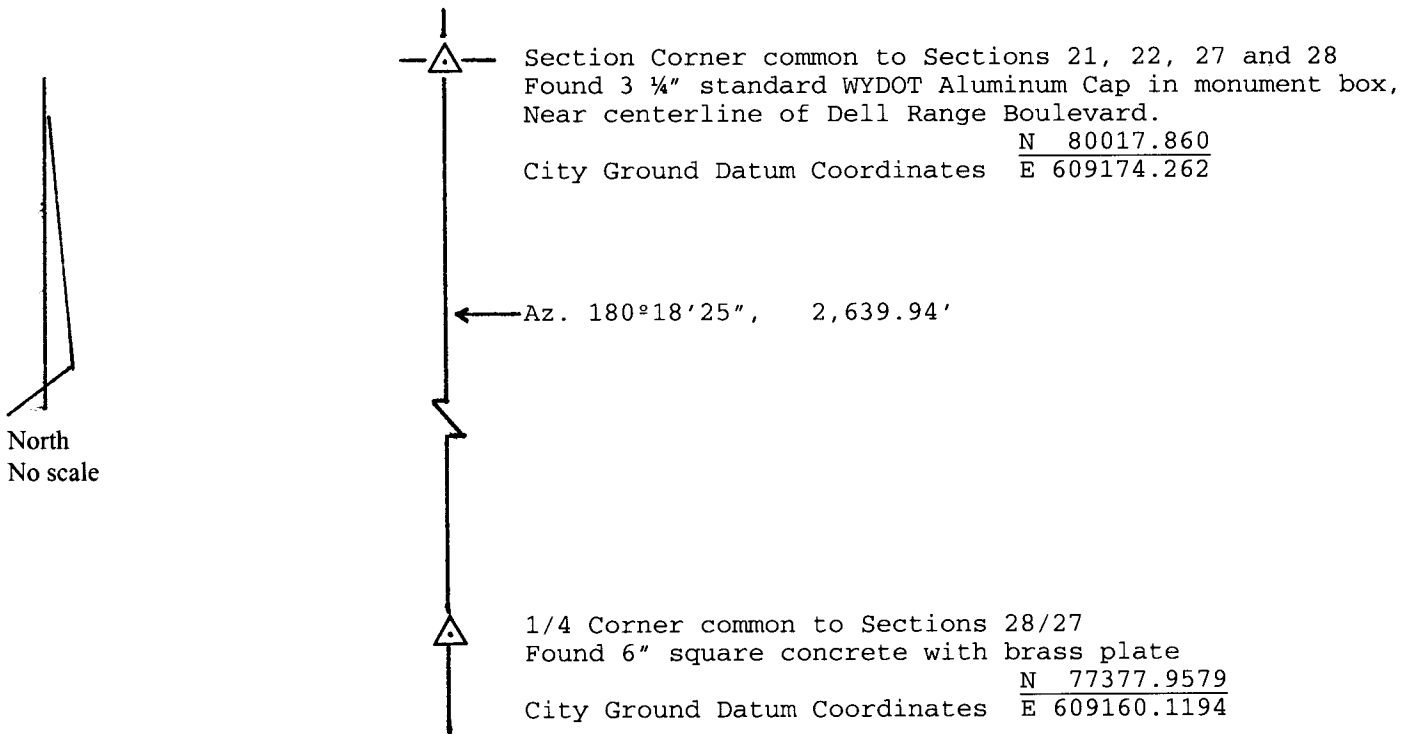
**¼ COR. Common to Sections 27 and 28**, Township 14 North, Range 66 West, 6<sup>th</sup> PM, Laramie County, Wyoming.

**ORIGINAL GLO:** 17" X 7" X 5" Limestone.

**FOUND:** 6" square concrete with brass plate as described in CERTIFIED LAND CORNER RECORDATION filed by John Steil, LS No. 2500, in March 1982. Two of the three P.K. nail reference points were found still in place. The center punch in the brass plate was accepted for the reestablished position of this ¼ Corner. This monument was found approximately 8" below the surface.

**NOTE:** Also found a No.5 rebar set on the east side of the concrete base, being 0.21' east of the center punch in the brass plate. I have found no public record for the origin of this rebar, and have spoken with several local land surveyors, none of whom knew anything about the origin of this rebar. Therefore, since there is no record that I have found, or an identifying survey cap, **I have not accepted this position** for the position of the ¼ Corner if that was its intent.

**REHABILITATION:** Set a 6" dia. section of white PVC on top of concrete monument, dirt backfilled around PVC and placed an old 6" cast iron water valve lid on top, flush with ground level, for easier location and access to monument.



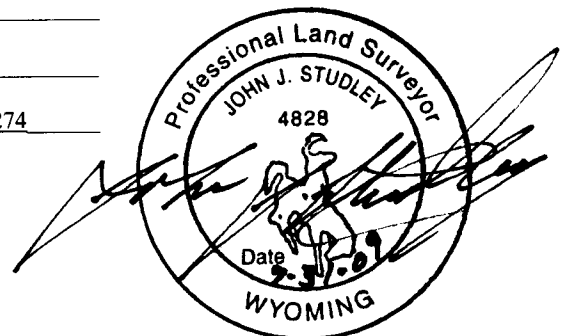
Date of Field Work: June & July 2009 Office Reference: Plat for Windmill Road Second Filing

### CROSS INDEX DIAGRAM

1	2	3	4	5	6	7	8	9	10	11	12	13	14	15	16	17	18	19	20	21	22	23	24	25		
A																									A	
B																									B	
C	6					5						4													C	
D																										D
E																										E
F																										F
G						7						8														G
H																										H
J																										J
K																										K
L																										L
M						18						17														M
N																										N
O																										O
P																										P
Q																										Q
R																										R
S																										S
T																										T
U																										U
V																										V
W																										W
X																										X
Y																										Y
Z																										Z
	1	2	3	4	5	6	7	8	9	10	11	12	13	14	15	16	17	18	19	20	21	22	23	24	25	

Land Surveyor / Firm / Address  
John J. Studley, LS 4828  
City of Cheyenne, City Surveyor  
2101 O'Neil Ave.  
Cheyenne, WY 82001  
 Telephone: 307-637-6274

This corner record was prepared by me or under my direction and supervision.  
 SEAL & SIGNATURE



Corner Name: One Quarter Corner Common to Sections: 28/27 T 14 N. R 66 W.; 6th P.M. Cross-Index No.: T-13  
 SBRPEPLS/PLSW: March 1994; PLSW January 1998